

Recorder Flash Cards:

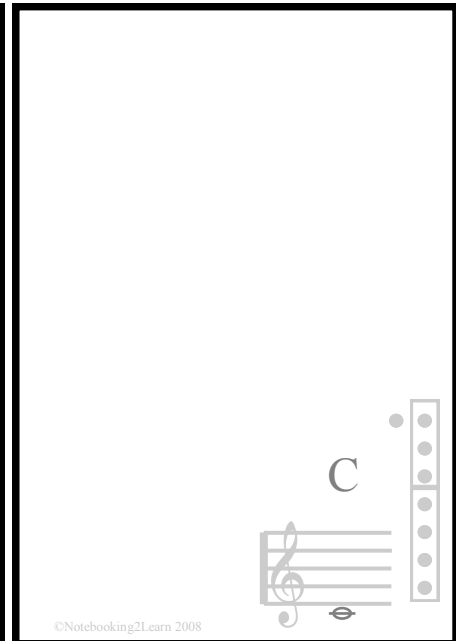
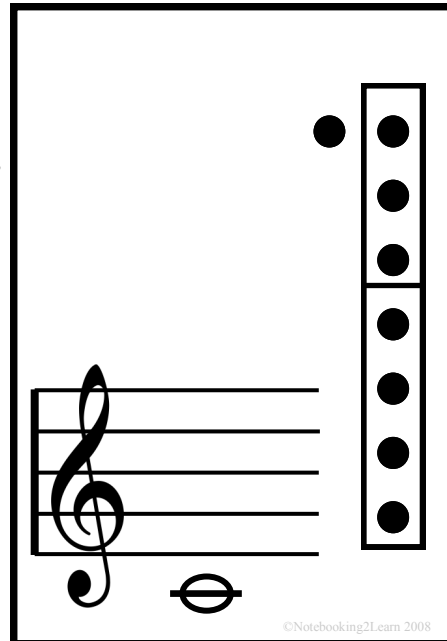
This file contains Finger Chart Cards for 10 notes on the recorder.

Front

Back

Flash Cards:

Print Pages front to back to use as flashcards. Use card-stock and or laminate the cards for more durability.

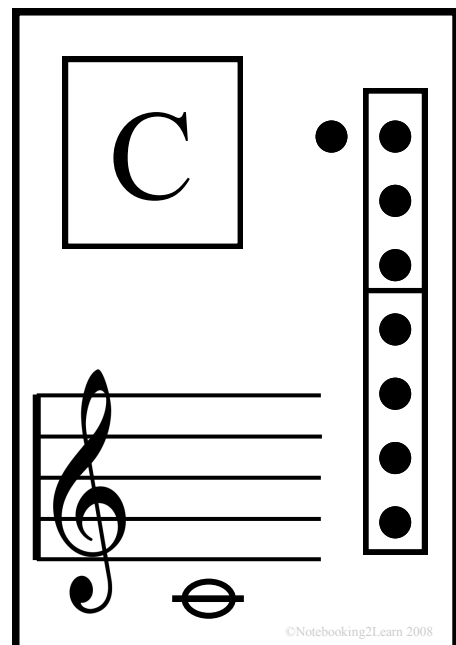
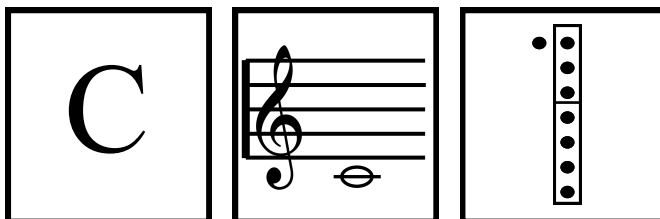


Matching Cards:

Print Front Sides of flashcards and note name cards on page 8. Have your student match the note names to the finger chart.

Three-Way Matching Game:

Print mini cards found on pages 8-10 and have your child match them.



A musical staff with a treble clef. A whole note is placed on the first line (G4). To the right of the staff is a vertical column of 10 dots, divided into two groups of five by a horizontal line. The top five dots are black, and the bottom five dots are white.

©Notebooking2Learn 2008

A musical staff with a treble clef. A whole note is placed on the second line (B4). To the right of the staff is a vertical column of 10 dots, divided into two groups of five by a horizontal line. The top nine dots are black, and the bottom dot is white.

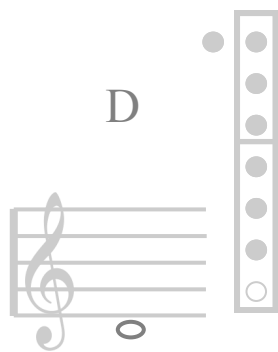
©Notebooking2Learn 2008

A musical staff with a treble clef. A whole note is placed on the third line (D5). To the right of the staff is a vertical column of 10 dots, divided into two groups of five by a horizontal line. The top seven dots are black, and the bottom three dots are white.

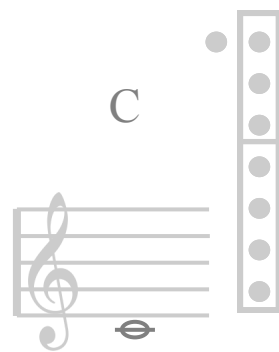
©Notebooking2Learn 2008

A musical staff with a treble clef. A whole note is placed on the fourth line (F5). To the right of the staff is a vertical column of 10 dots, divided into two groups of five by a horizontal line. The top eight dots are black, and the bottom two dots are white.

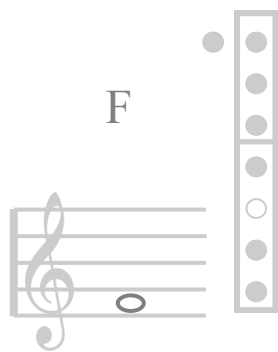
©Notebooking2Learn 2008



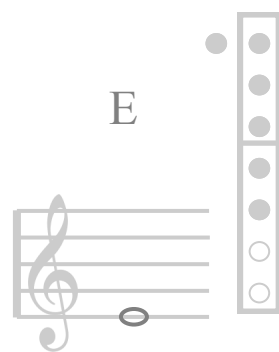
©Notebooking2Learn 2008



©Notebooking2Learn 2008



©Notebooking2Learn 2008



©Notebooking2Learn 2008

©Notebooking2Learn 2008

©Notebooking2Learn 2008

©Notebooking2Learn 2008

©Notebooking2Learn 2008

G

©Notebooking2Learn 2008

F#

©Notebooking2Learn 2008

B

©Notebooking2Learn 2008

A

©Notebooking2Learn 2008

A musical staff with a treble clef. A single note is placed on the second line. To the right of the staff is a vertical column of ten circles, divided into two groups of five by a horizontal line. A solid black circle is positioned to the left of the top circle of the upper group.

©Notebooking2Learn 2008

A musical staff with a treble clef. A single note is placed on the second line. To the right of the staff is a vertical column of ten circles, divided into two groups of five by a horizontal line. A solid black circle is positioned to the left of the second circle of the upper group.

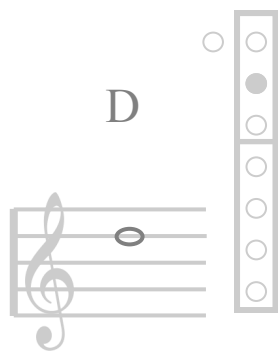
©Notebooking2Learn 2008

A musical staff with a treble clef. To the right of the staff is a vertical column of ten circles, divided into two groups of five by a horizontal line. A single open circle is positioned to the left of the top circle of the upper group.

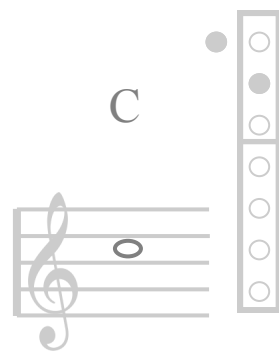
©Notebooking2Learn 2008

A musical staff with a treble clef. To the right of the staff is a vertical column of ten circles, divided into two groups of five by a horizontal line. A single open circle is positioned to the left of the top circle of the upper group.

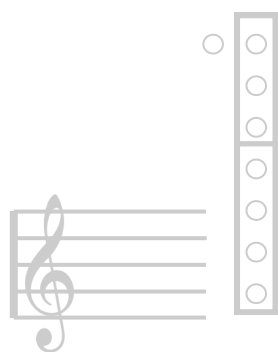
©Notebooking2Learn 2008



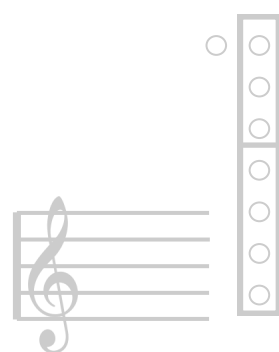
©Notebooking2Learn 2008



©Notebooking2Learn 2008



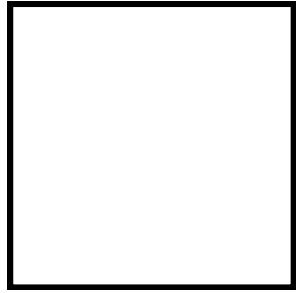
©Notebooking2Learn 2008



©Notebooking2Learn 2008

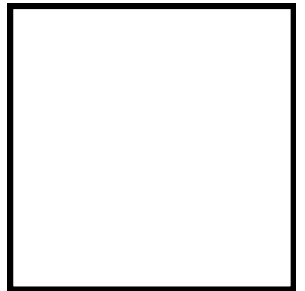
C

G



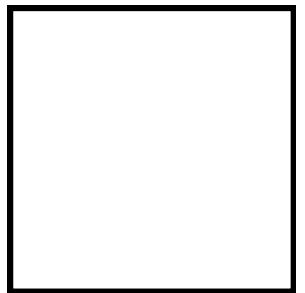
D

A



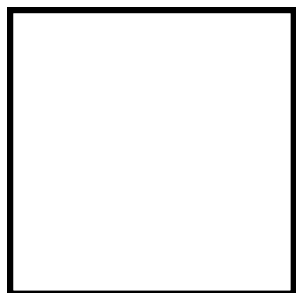
E

B



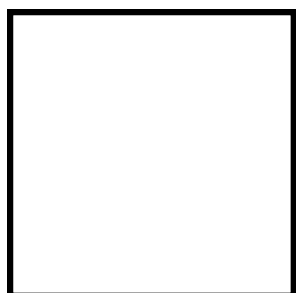
F

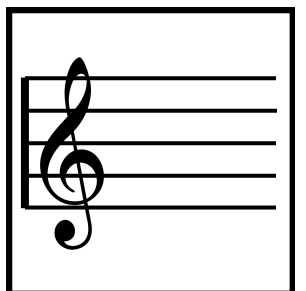
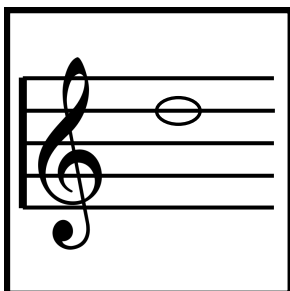
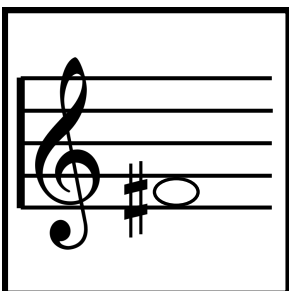
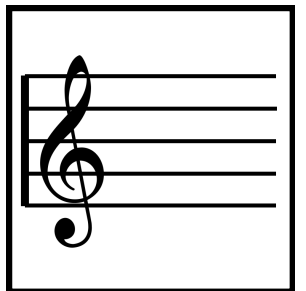
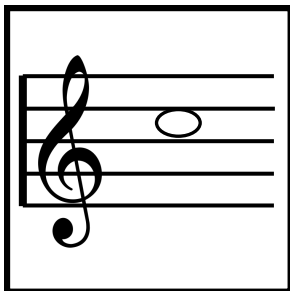
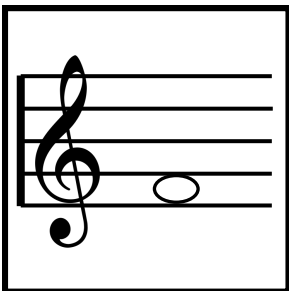
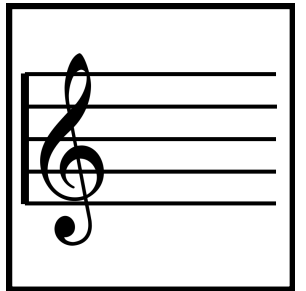
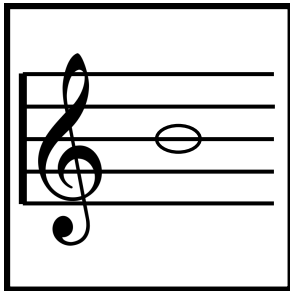
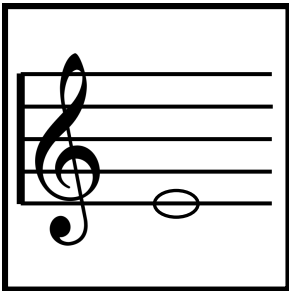
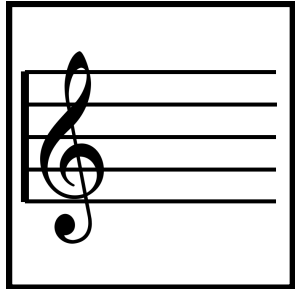
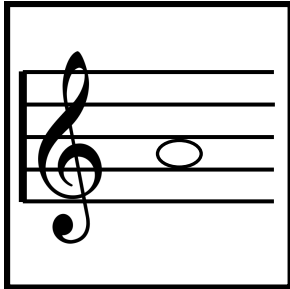
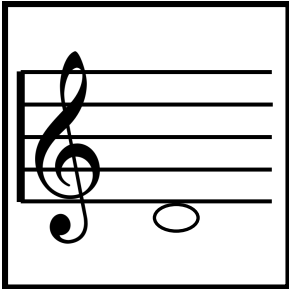
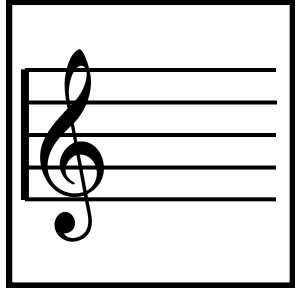
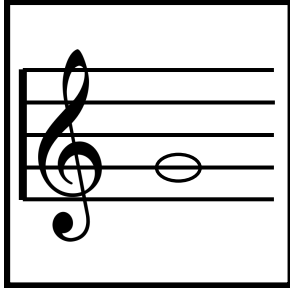
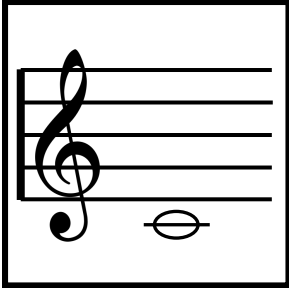
C

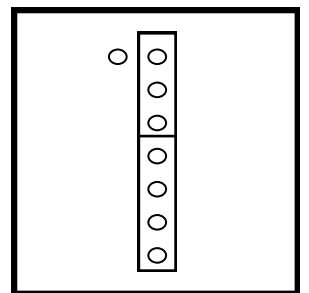
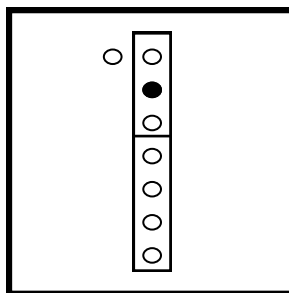
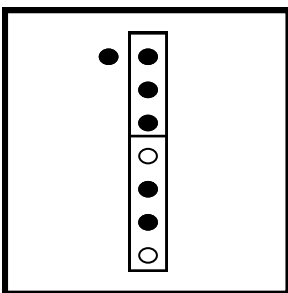
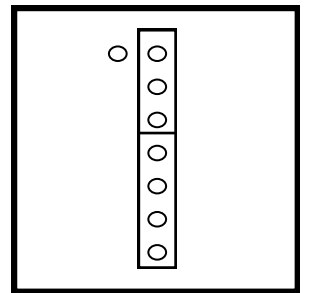
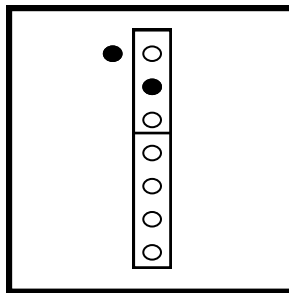
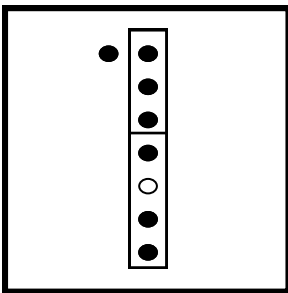
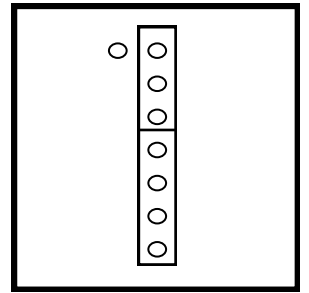
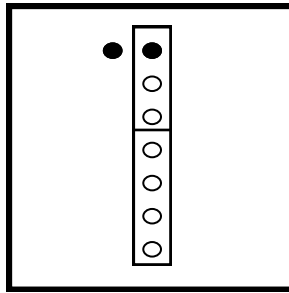
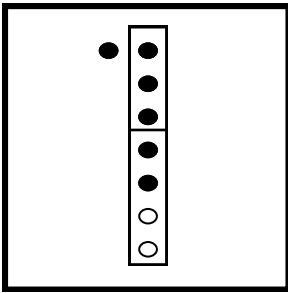
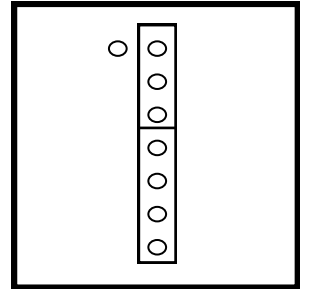
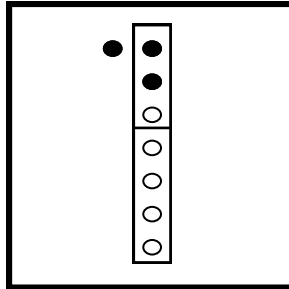
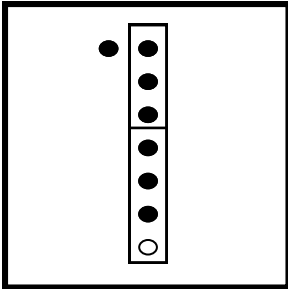
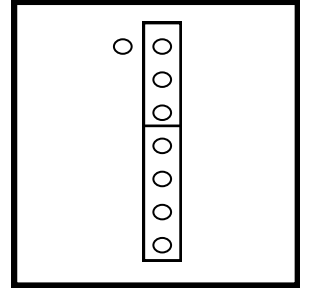
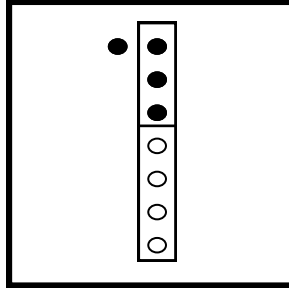
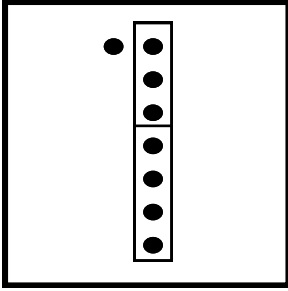


F#

D







Storing your Flashcards:

To Store your flashcards in a notebook, cut a 6X9 manila envelope in half and tape it along the bottom half with clear packing tape.

Adhere the envelope to a pre-punched sheet of cardstock.

